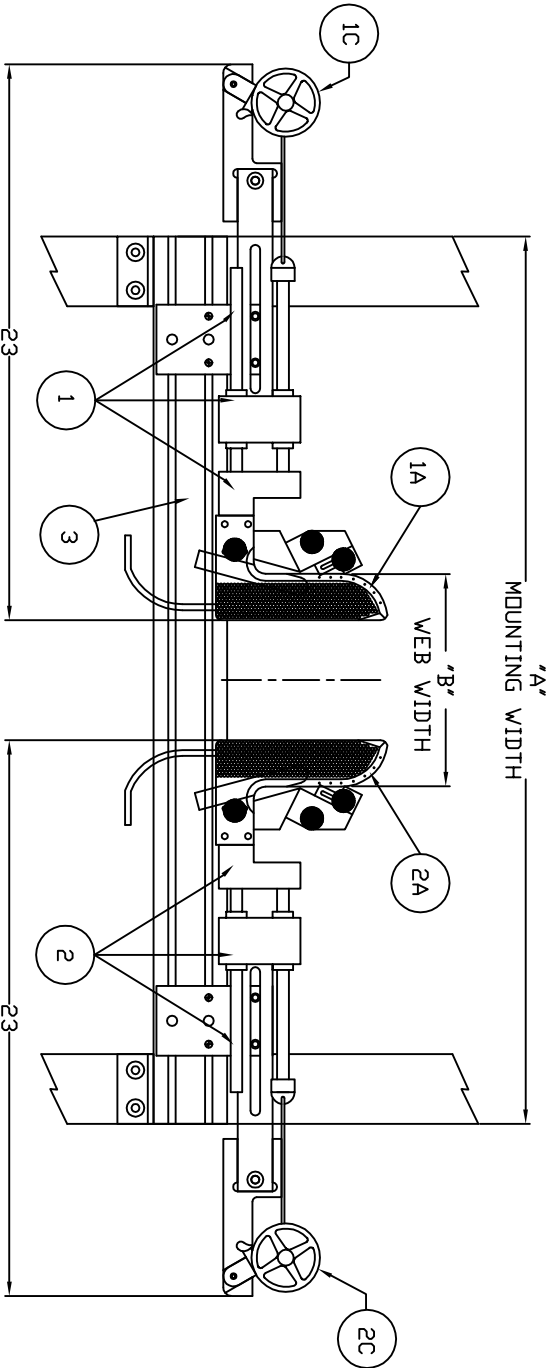


- \* BOTH BLADES ARE ADJUSTABLE
- \* 80/20 EXTRUDED ALUMINUM FRAME ALLOWS INFINITE ADJUSTMENT FOR VARIOUS WEB WIDTHS
- \* CHANGE BLADES ON THE FLY WITH TWD HEAD DESIGN
- \* FORGED AIR FEATURE TO PREVENT BLOCKING
- \* HARD CHROME PLATING
- \* TENSIONER ALLOWS INFINITE WEB TENSION

NOTE: THIS UNIT CAN BE MOUNTED TO EITHER THE TOWER OR THE WINDER.



ORDERING INFORMATION

DESCRIPTION	PART NO.
Complete Edge Slitter Assembly	D-241- (state 'A' dim.)
Left Hand Slitter Assembly	D-241-1
Left Hand Head with Blade Changer	D-241-1A
Right Hand Slitter Assembly	D-241-2
Right Hand Head with Blade Changer	D-241-2A
80/20 Mounting Frame	D-241-3 (state 'A' dim.)

# Reynolds & Co.

1916 S. 25TH ST. TERRE HAUTE, IN

TITLE	
EDGE SLITTER ASSEMBLY	
DR. BY BAT	JOB NO. E-17
CHK'D BY KWC	REF. DWG. D-241
SCALE NONE	DWG. NO. 1688-A
DATE 4-15-08	